



ADVANCED NATIONAL NETWORKS FOR ADMINISTRATIONS

European projects Maritime Single Window



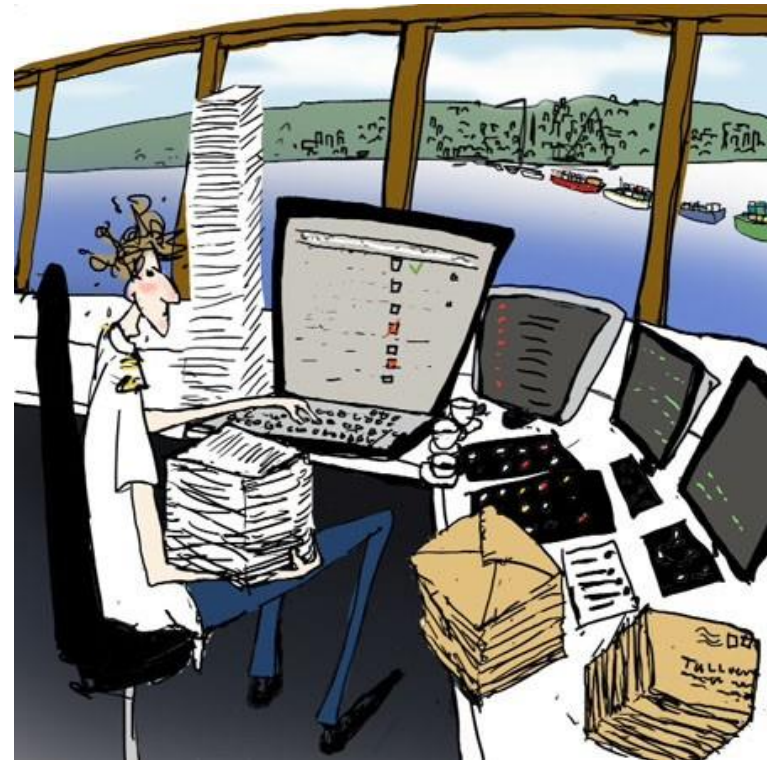
Co-financed by the European Union

Trans-European Transport Network (TEN-T)

In maritime transport, the EU Member States foster the development of an effective and harmonized European-wide electronic exchange of ship reporting messages between the industry and public authorities.

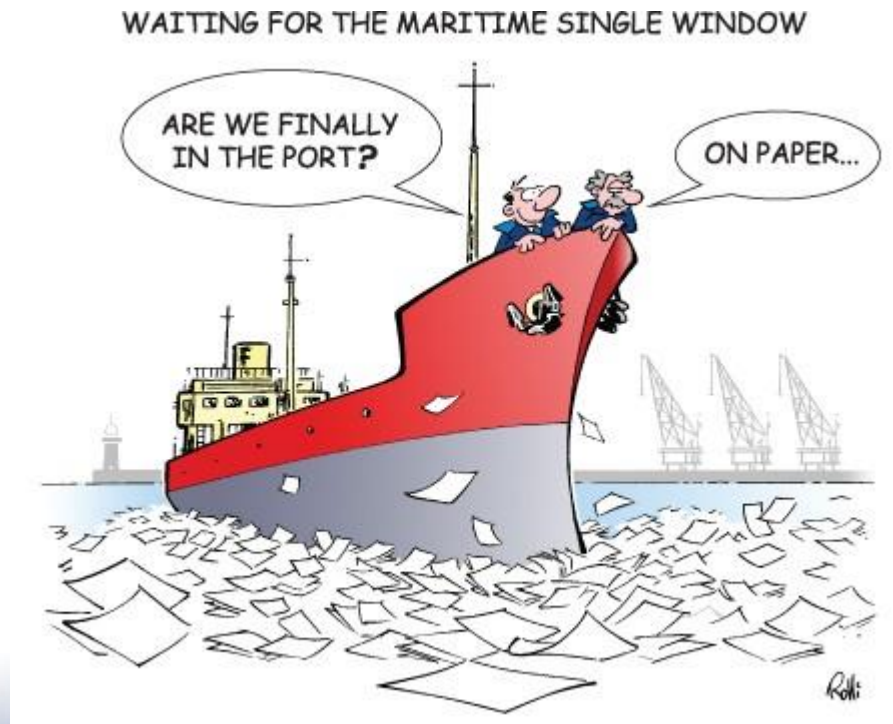
The aim is:

- To make Europe more competitive
- To improve interconnectivity (national-international and public authorities-business)
- To reduce existing barriers
- To create a level playing field between various operators and transport modes
- To develop a one stop shop approach (Maritime Single Window – MSW)



EU Directive 2010/65/EU - Reporting Formalities for Ships arriving in/departing from EU ports - serves as the overall legal framework to allow for the development and implementation of interconnecting national MSW.

To build the national MSW it is necessary for the EU Member States, neighbouring countries and business to co-operate.



General goal

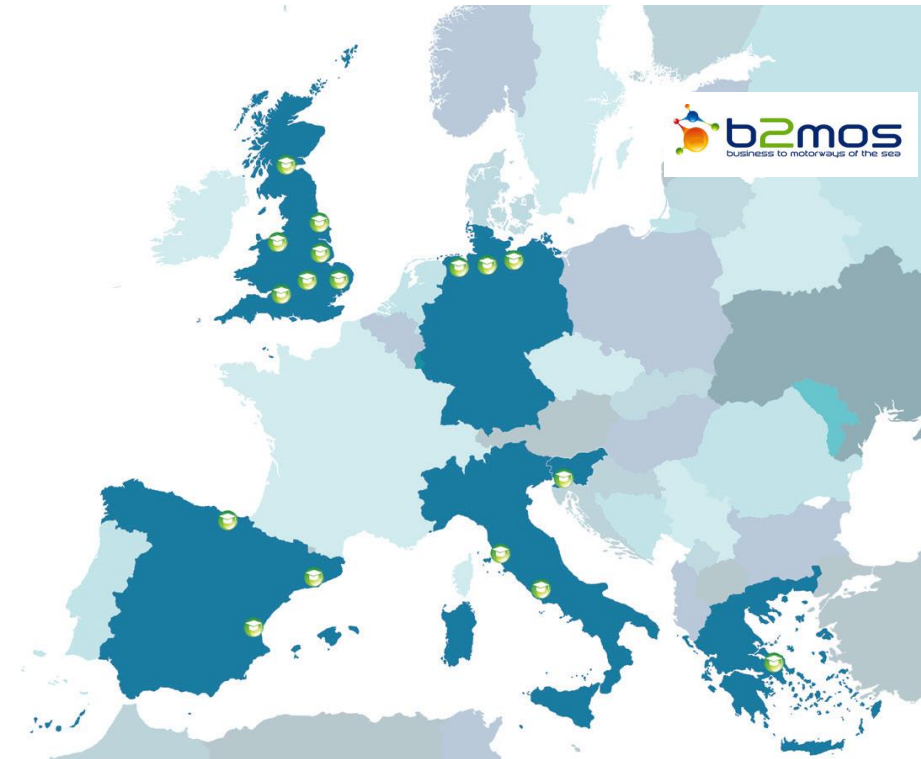
ANNA is an EU Member States driven project - in close co-operation with the EC - to support the effective implementation of the EC Directive 2010/65/EU.

The B2MoS project aims to help business communities and port authorities' systems prepare and adapt to the requirements of the EU Directive 2010/65/EU.

ANNA fosters a harmonized approach for administrative facilitation:

- **to reduce red tape for users,**
- **to parse IT languages and**
- **to exchange data between national MSW networks.**

Countries involved



Specific objectives b2mos

- Preparing port management, PCS and business stakeholders' systems to efficiently comply with the requirements of Directive 2010/65/EU and with new NSW
- Improving interoperability of electronic messages and systems
- Extending the electronic T2L initiative
- Improving the exchange of information of public and private organisations

Specific objectives AnNa

Master Plan:

- National scenarios and measures, and a mechanism for gauging national implementation
- A strategy connecting the (national) MSW to national logistics platforms, e-Freight developments and other EU or national initiatives
- Project identification

Consultation and co-operation:

- **A platform for all stakeholders**, i.e. to exchange knowledge, experience and interests and to connect to B2A projects, including the EC TEN-T MoS ICT related projects MIELE, WIDERMoS and **B2MoS**
- Incorporating business approaches and solutions into the frameworks being developed in the ANNA Master Plans



Country level
Master Plan
Pilot projects

**Directive 2010/65/EU
MSW**

**Exchange of knowledge
Interoperability**



Port management
Port Authorities
PCS
stakeholders'



Thanks for your attention!

www.b2mos.eu

www.annamsw.eu

ANNA
MARITIME SINGLE WINDOW

ADVANCED NATIONAL NETWORKS FOR ADMINISTRATIONS



Co-financed by the European Union

Trans-European Transport Network (TEN-T)

The sole responsibility of this publication lies with the author. The European Union is not responsible for any use that may be made of the information contained therein.